



IP8166

Fixed Network Camera



2MP · Smart Stream II · SNV · WDR Enhanced · 3DNR · Video Rotation · Defog

VIVOTEK's IP8166 is a professional box network camera equipped with a Full HD sensor enabling a viewing resolution of 1920x1080 at a smooth 30 fps. The IP8166 is capable of capturing high quality, high resolution video at up to 2 Megapixels in low light environments with VIVOTEK's SNV technology, making the camera ideal for a wide range of video surveillance applications, including supermarkets, banks, hotels and parking lots and also suitable for many more situations.

Further empowering this professional 24/7 camera, VIVOTEK's Smart Stream II technology enables the IP8166 to optimize quality for a desired region or area and therefore to maximize efficiency of bandwidth usage. The IP8166 can reduce both bandwidth and storage consumption by up to 50%* while still retaining the same excellent image quality as a Full HD camera.

To meet the demands of diverse scenarios, the IP8166 is compatible with a variety of accessories, from external IR LEDs and enclosures, to long-range solutions and PoE total solutions. With the added support and flexibility of an abundance of professional accessories, the IP8166 is an excellent candidate for your total surveillance solution.

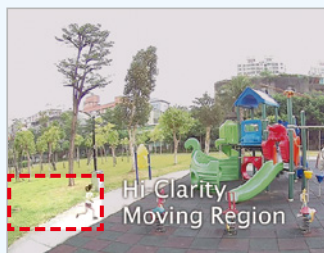
* Depending on scene being monitored.

Smart Stream II

Save up to 50% of bandwidth and storage by optimizing quality for moving regions or ROI.



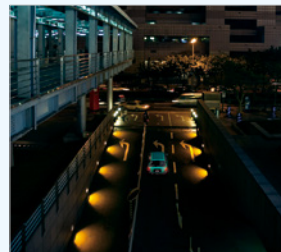
Without Smart Stream II



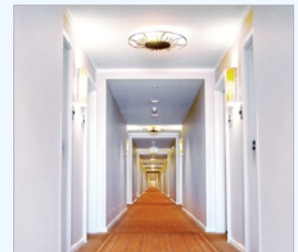
With Smart Stream II

Key Features

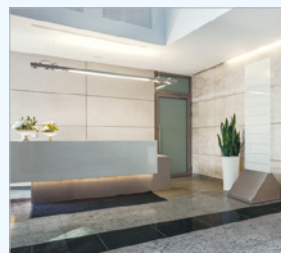
- 2-Megapixel CMOS Sensor
- 30 fps @ 1920x1080
- SNV (Supreme Night Visibility) for Low Light Conditions
- Smart Stream II to Optimize Bandwidth Efficiency
- WDR Enhanced for Unparalleled Visibility in High Contrast Environments
- 3D Noise Reduction for Low-light Conditions
- Video Rotation for Corridor View
- Lens Profile to Ensure the Full Compatibility for Different Lens Options



Low Light



Hotel



Lobby



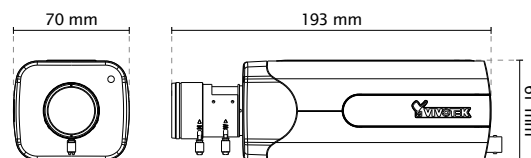
Supermarket

Technical Specifications

Model	IP8166
System Information	
CPU	Multimedia SoC (System-on-Chip)
Flash	128MB
RAM	256MB
Camera Features	
Image Sensor	1/2.8" Progressive CMOS
Maximum Resolution	1920 x1080 (2MP)
Lens Type	Vari-Focal
Focal Length	f= 2.8 ~ 12 mm
Aperture	F1.4 ~ F2.4
Auto-iris	DC-Iris (P-iris reserved)
Field of View	38° ~ 101° (Horizontal) 21° ~ 63° (Vertical) 40° ~ 122° (Diagonal)
Shutter Time	1/5 sec. to 1/32,000 sec.
WDR Technology	WDR Enhanced
Day/Night	Removable IR-cut filter for day & night function
Minimum Illumination	0.08 Lux @ F1.4 (Color) 0.001 Lux @ F1.4 (B/W)
Pan/Tilt/Zoom Functionalities	ePTZ: 48x digital zoom (4x on IE plug-in, 12x built in)
On-board Storage	Slot Type: SD/SDHC/SDXC card slot Seamless Recording
Video	
Compression	H.264 & MJPEG
Maximum Frame Rate	30 fps@ 1920x1080 In both compression modes
Maximum Streams	4 simultaneous streams
S/N Ratio	49 dB
Dynamic Range	70 dB
Video Streaming	Adjustable resolution, quality and bitrate Smart Stream II
Image Settings	Time stamp, text overlay, flip & mirror; Configurable brightness, contrast, saturation, sharpness, white balance, exposure control, gain, backlight compensation, privacy masks; Scheduled profile settings, video rotation, 3DNR, defog, lens profile
Audio	
Audio Capability	Two-Way Audio (full duplex)
Compression	G711, G726
Interface	External microphone input External line output
Network	
Users	Live viewing for up to 10 clients
Protocols	IPv4, IPv6, TCP/IP, HTTP, HTTPS, UPnP, RTSP/RTP/RTCP, IGMP, SMTP, FTP, DHCP, NTP, DNS, DDNS, PPPoE, CoS, QoS, SNMP, 802.1X, UDP, ICMP, ARP, SSL, TLS
Interface	10 Base-T/100 Base-TX Ethernet (RJ-45) *It is highly recommended to use standard CAT5e & CAT6 cables which are compliant with the 3P/ETL standard.
ONVIF	Supported, specifications available at www.onvif.org
Intelligent Video	
Video Motion Detection	Five-window video motion detection Line crossing detection, field detection, loitering detection
VCA	* Available per project request

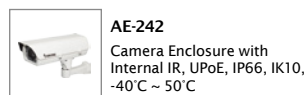
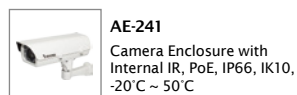
Alarm and Event	
Alarm Triggers	Motion detection, manual trigger, digital input, periodical trigger, system boot, recording notification, camera tampering detection, audio detection
Alarm Events	Event notification using digital output, HTTP, SMTP, FTP, NAS server and SD Card File upload via HTTP, SMTP, FTP, NAS server and SD card
General	
Connectors	RJ-45 cable connector for 10/100Mbps Network/PoE connection Audio input Audio output DC 12V power input AC 24V Power input Digital input*3 Digital output*1
LED Indicator	System power and status indicator
Power Input	DC 12V AC 24V IEEE 802.3af PoE Class 0
Power Consumption	Max. 6.8 W
Dimensions	193 (D) x 70 (W) x 61 (H) mm
Weight	626 g
Safety Certifications	CE, LVD, FCC Class B, VCCI, C-Tick, UL
Operating Temperature	Starting Temperature: 0°C ~ 50°C (32°F ~ 122°F) Working Temperature: -10°C ~ 50°C (14°F ~ 122°F)
Humidity	90%
Warranty	36 months
System Requirements	
Operating System	Microsoft Windows 8/7/Vista/XP/2000
Web Browser	Mozilla Firefox 7~43 (streaming only) Internet Explorer 7/8/9/10/11
Other Players	VLC: 1.1.11 or above Quicktime: 7 or above
Included Accessories	
CD	User's manual, quick installation guide, Installation Wizard 2, VAST
Others	Quick installation guide, mounting bracket, screw pack, lens

Dimensions

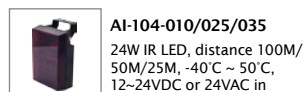


Compatible Accessories

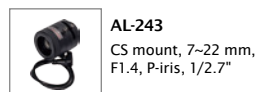
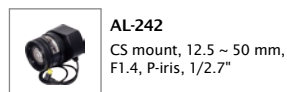
Enclosures



IR Illuminators



Lens



PoE Solution

